

# Creation Theme

## Creation Theme:

Out of a timeless eternity God started a measure of time. First a (Big Bang) creation of Heaven and Earth. God then used this foundation to "Let", "Divide", "Bring Forth", "Form", and "Make" all the wonders of this Earth to support His plan for man.

This [free Bible timeline](#) scroll page is a reference of [theistic evolution](#) and [intelligent design](#).

- Home
- How to use Scroll
- Creation Theme**
- Earth Ages
- Adamic Theme
- Flood Theme
- Abrahamic Theme
- Key of David Theme
- Christ Theme
- Prophecy Theme
- Millennium Theme
- Third Age Theme
- References
- Authors/Contact Info

ETERNITY

**In the Beginning was God. Gen 1:1 (intelligent design)**

I am the Alpha and Omega. The Beginning and the end. Rev 1:8,11,21:6,22:13, Isa 41:4,44:6,48:12

In the beginning was the Word and the Word was with God and the Word was God. Jhn 1:1,14, Jhn 8:58, Col 1:15-18

The earth was without form and void. The solar system is still forming. Earth is present but there is no form yet. Gen 1:2

God created all things for His pleasure. Created not in vain. Rev 4:11, Isa 45:18

Time Began, (Big Bang) He started His creation from nothing. Heb 11:3, Isa 48:13, Gen 1:1-3 [intelligent design](#) **REFERENCE BIG BANG**

**Day One (the first period of time) REFERENCE DAY**

Let there be light Gen 1:3 **Fusion Lights the Sun REFERENCE FUSION**

Light is contained in the sun. All accounts from the first day on are in reference to the earth.

The light is Day and the darkness is Night. The light will not be visible to the earth until the fourth day. Gen 1:4

**Day Two (the second period of time)**

And God divided the waters which were under the firmament (Sea) from the waters which were above the firmament (atmosphere). The atmosphere is too thick for sunlight to shine through. Gen 1:6-8

**Day Three (the third period of time)**

Let the waters... Let the dry land... Gen 1:9 [\(theistic evolution\)](#) **REFERENCE CHANGE**

Gathering of dry parts = Earth Gathering of water parts = Seas Gen 1:10

The earth brought forth plants Gen 1:11-13 **REFERENCE CHANGE**

Many scientist feel life started by chemosynthesis from the early forming earth heat. **REFERENCE ORIGINS (LIFE)**

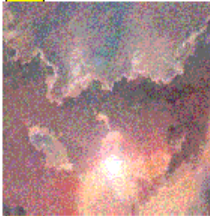
**Day Four (the fourth period of time)**

"Let the luminaries be in the expanse (firmament)." Ref. Green Interliner Vol I Page 2 Gen 1:14

Lights shown for signs and seasons. Gen 1:14-19 Sun's light made visible through the earth's atmosphere.

Lights for signs before the Lord's Day Act 2:19-20 Joe 2:30-31 Ams 5:8 The lesser light (moon) Gen 1:14,16 is also for signs. [See "Signs and Wonders".](#)

15 Billion years ago



1st Earth Age Job 8:8

7 Billion years ago

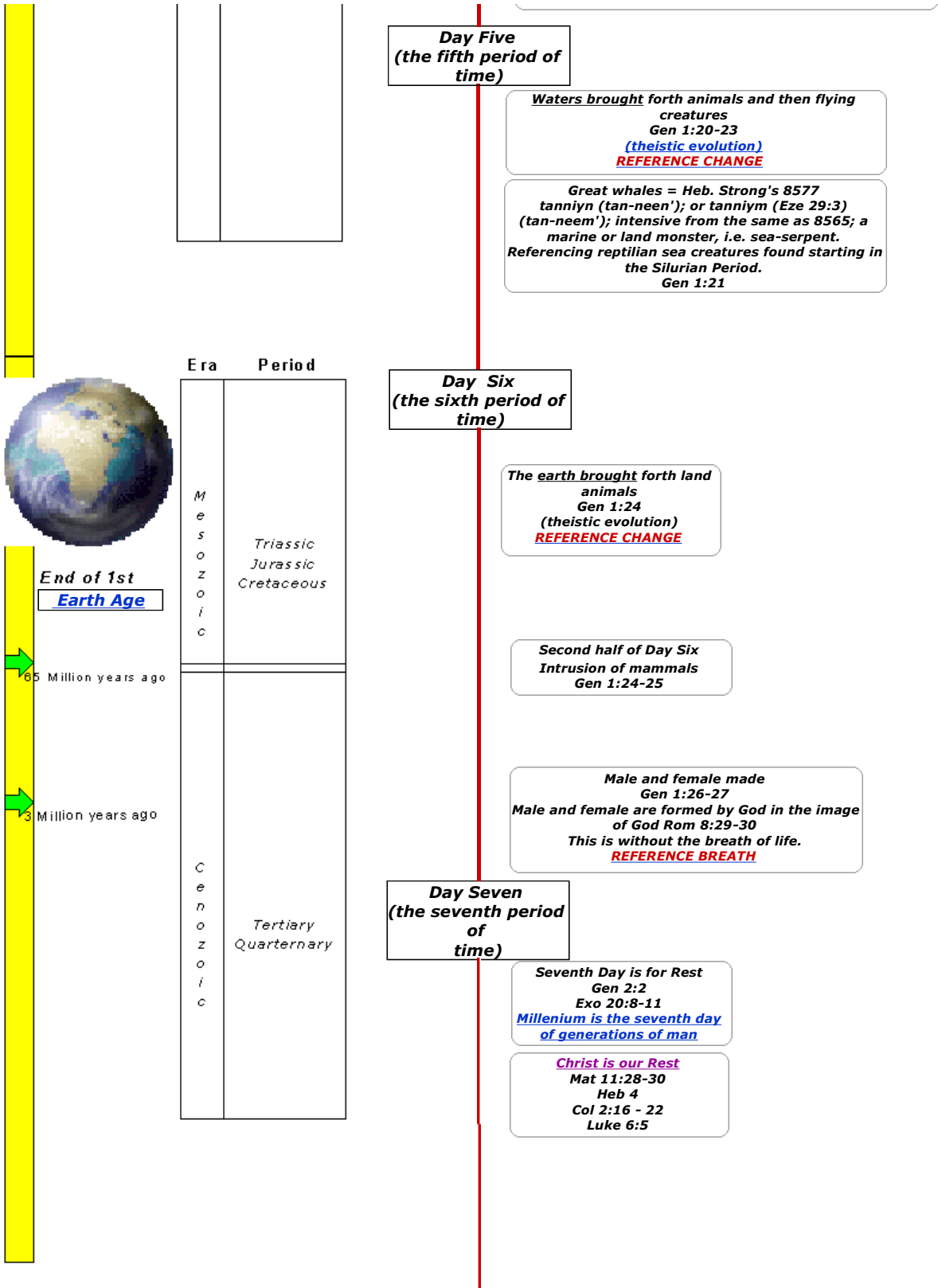
600 Million years ago

Era Period

P  
r  
e  
c  
a  
m  
b  
r  
i  
a  
n

Era Period

P  
a  
l  
e  
o  
z  
o  
i  
c  
  
Cambrian  
Ordovician  
Silurian  
Devonian  
Carboniferous  
Permian



This free Bible timeline scroll page is a reference of [theistic evolution](#) and [intelligent design](#).

[\[Home\]](#) [\[How to use Scroll\]](#) [\[Creation Theme\]](#) [\[Earth Ages\]](#) [\[Adamic Theme\]](#) [\[Flood Theme\]](#) [\[Abrahamic Theme\]](#) [\[Key of David Theme\]](#) [\[Christ Theme\]](#) [\[Prophecy Theme\]](#) [\[Millennium Theme\]](#) [\[Third Age Theme\]](#) [\[References\]](#) [\[About the Authors\]](#)